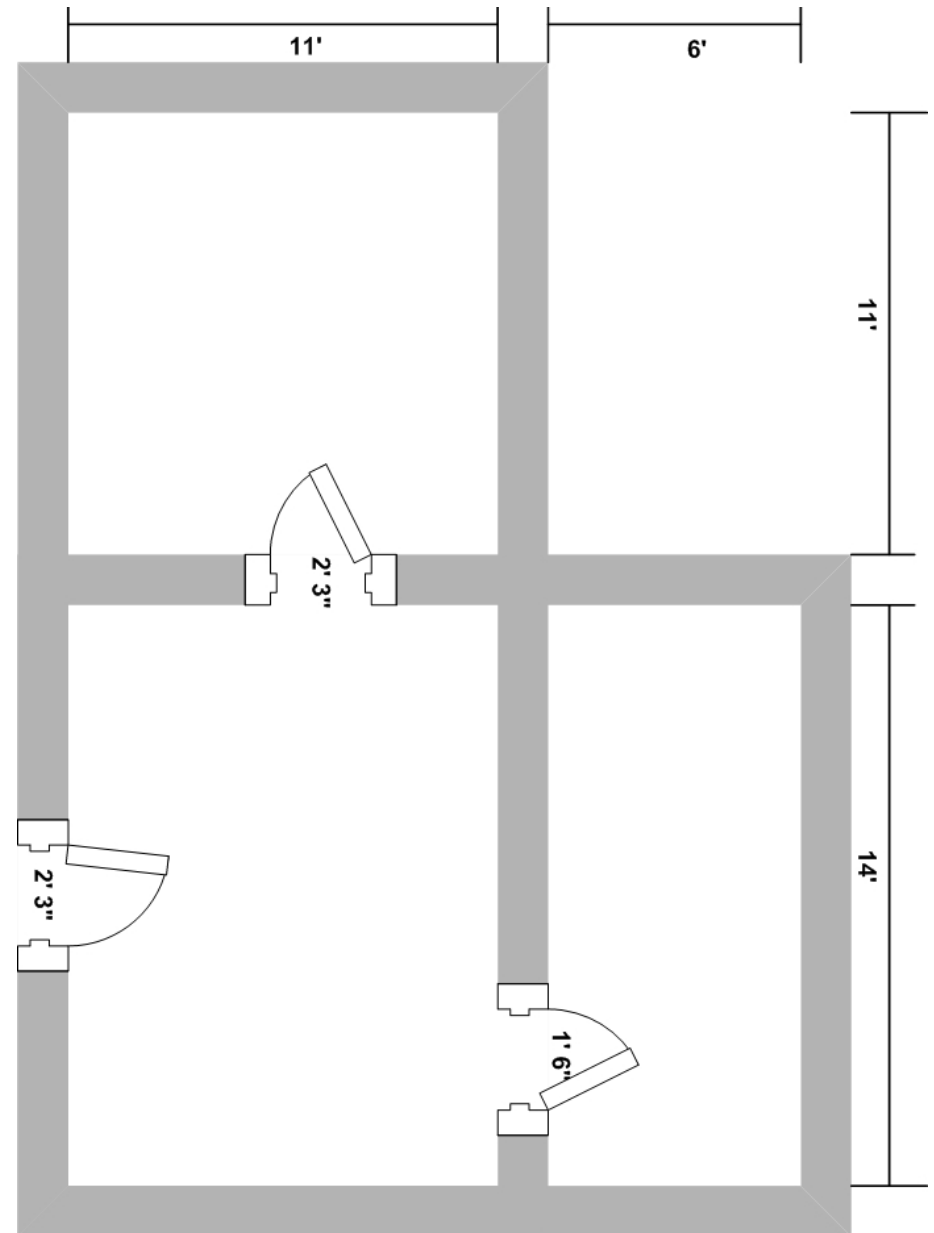


## ESTIMATING WORKSHOP

Using the floor plan shown, determine the amounts of materials listed below (Note: Round all answers to the next highest number).

- \_\_\_\_\_ 1. Total floor space (in sq ft)
- \_\_\_\_\_ 2. Number of wood studs (16" OC)
- \_\_\_\_\_ 3. Linear feet of interior base molding
- \_\_\_\_\_ 4. Linear feet of wall plates (all double top plate)



This product was funded by a grant awarded under the President's High Growth Job Training Initiative as implemented by the U.S. Department of Labor's Employment & Training Administration. The information contained in this product was created by a grantee organization and does not necessarily reflect the official position of the U.S. Department of Labor. All references to non-governmental companies or organizations, their services, products, or resources are offered for informational purposes and should not be construed as an endorsement by the Department of Labor. This product is copyrighted by the institution that created it and is intended for individual organizational, non-commercial use only.

[www.CHICAGOWOMENINTRADES.org](http://www.CHICAGOWOMENINTRADES.org)